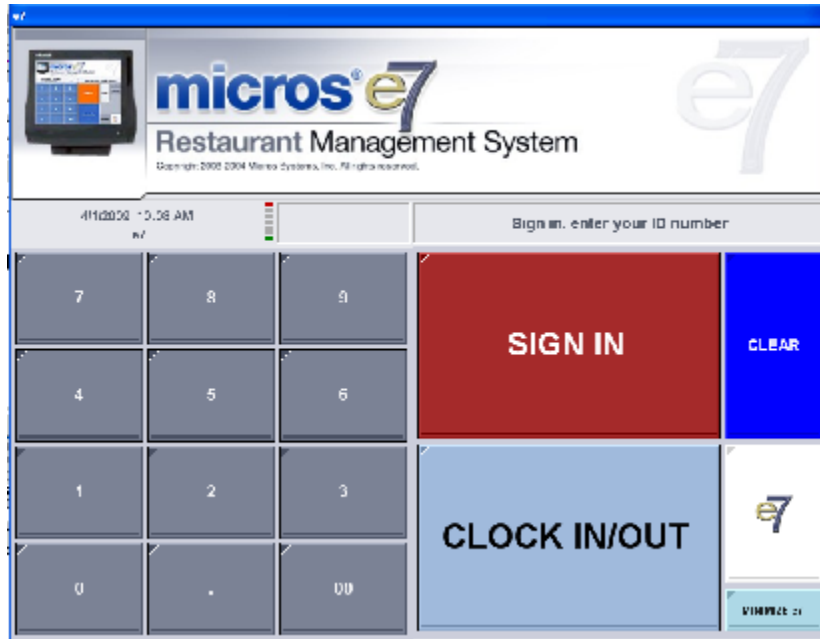
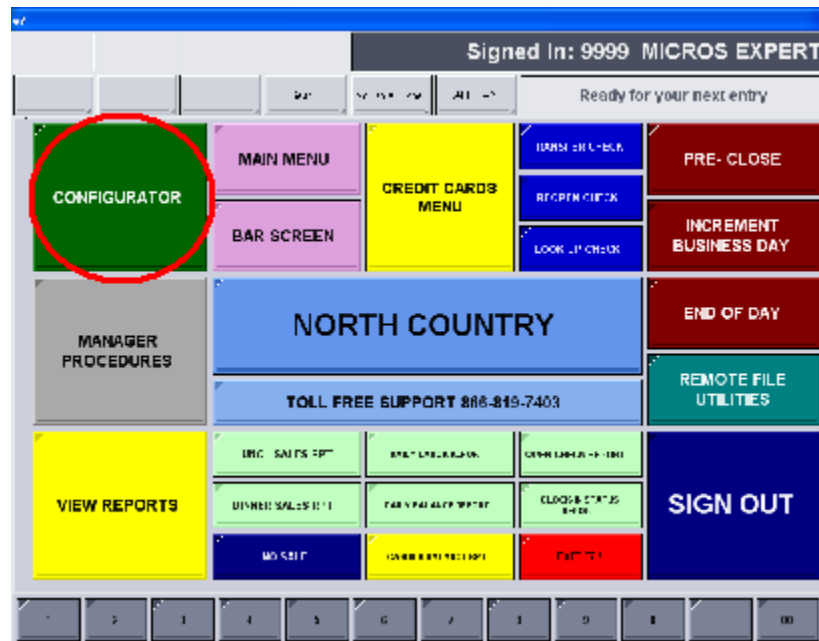


# HOW TO CHANGE THE TAX RATE ON MICROS e7

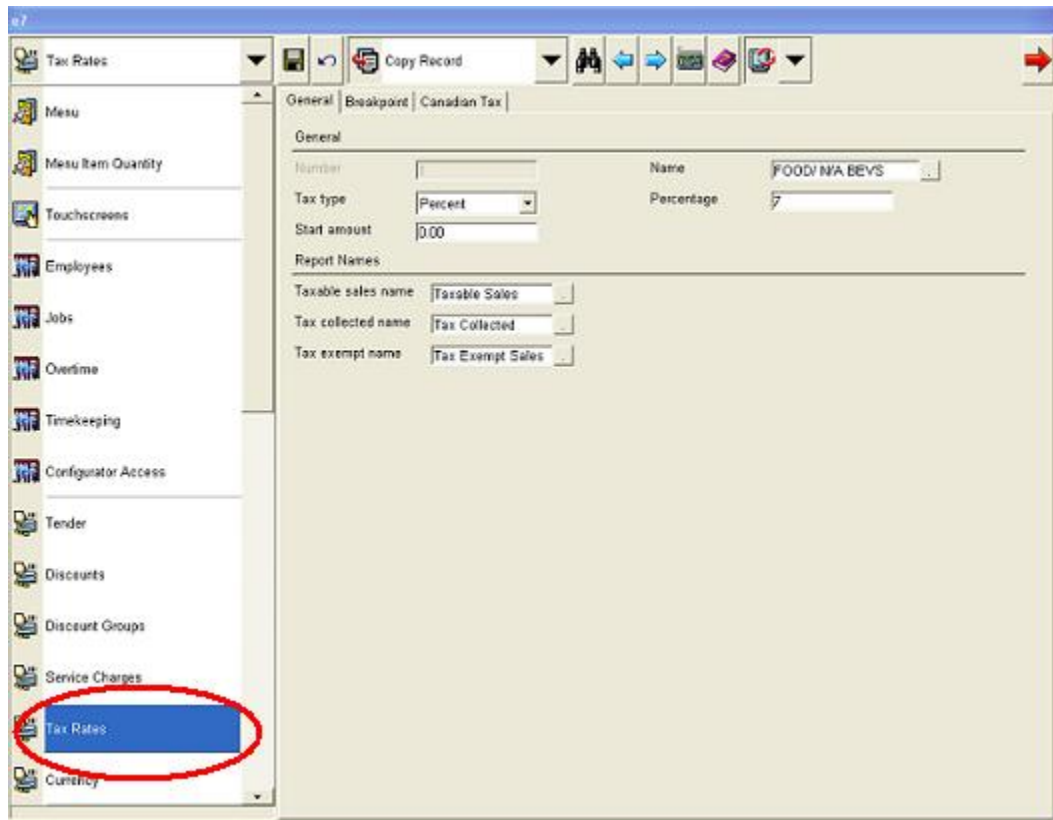
## 1. Sign into e7



## 2. Go into the "Configurator"



### 3. Navigate to “Tax Rates” via the drop down menu



1. Highlight Tax Rate on the left
2. Change to desired percent
3. Click on the Save on top (Disk)
4. Repeat for each rate, including Inclusive rates

